

# The Syntech Spectras GC955 series 100 bio gas / pyrolyse gas analyser

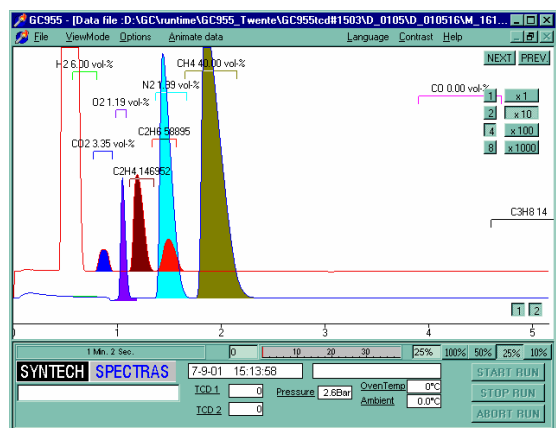
The Syntech Spectras GC955 series 100 bio gas / pyrolyse gas analyser is built for the analysis of air mixtures to control a bio gas reactor of a pyrolyse gas process. The system analyses the main by these processes formed compounds.

Requested is the measurement of nitrogen, oxygen, hydrogen, carbon monoxide, methane, from one column system and carbon dioxide ethene, ethane, propene and propane from the second.

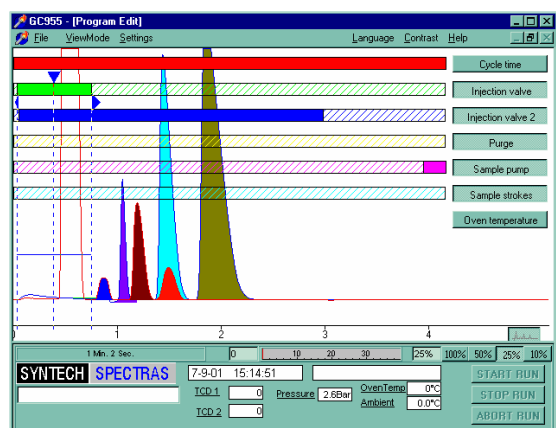
For this our instrument is the ideal choice: our instruments are not only designed for the analyst in the laboratory, but especially for the technician working at a control panel. Specialised analytical knowledge is not necessary. The instrument can be adapted to the measurement of other special mixtures, with inorganic compounds.



the two 10 port micro valves, the two TCD-detectors and the column oven with the two stripper columns and two analytical columns.



chromatogram of nitrogen, oxygen, ethene, ethane, carbon dioxide and methane



program edit window, with chromatogram in the background to optimise the application

The instrument is a gas chromatograph with two stripper columns, two analytical columns and two TCD-detectors. By switching two 10 port valves in an elegant pattern, the different compounds are separated and analysed. After each measurement cycle the system is clean again and no conditioning problems occur.

In the GC we use a standard industrial PC running under Windows. This means that the whole PC structure is used to handle also the results of measurements: data are interpreted and saved on the internal hard disk. Data can also be transferred by network and modem connection. It is possible to run the system from a separate PC. The results are calculated as vol % or ppm. The system can be coupled to a stream selector and alarms can be set at different levels.

Simple operations, good reliability, low maintenance cost are important for us. With a network of distributors in and outside of Europe you can be sure that your instrument comes with an appropriate training and that support is available to help you with problems.

<b>Bio gases</b>	Detector: 2 TCD with double valve system. Levels: 0.1% for TCD. Included items: Series 100 , two detectors and two valves, two stripper and first analysis column Porapak R,
<b>Pyrolyse gases</b>	2. analysis column Molsieves 5A, Temperature 80 °C, cycle time 5 min
<b>oxygen, nitrogen, hydrogen, methane, ethene, ethane, propene, propane, carbon monoxide and carbon dioxide</b>	
reproducibility	typical <3% at 0,5%
consumption of gas	4 bar, 100 ml/min helium, quality 5.0
dimensions	19" rack, 5 standard Height Units, depth 37.2 cm net
power demand	220 V AC, 250 VA (110 V AC available)
included hardware	computer Pentium III class, hard disk ≥40Gb, 2.5 ",display LCD 10.4 " colour, various data connection options
included software	Windows XPe, control of instrument: direct control via keyboard or mouse, or via remote host (RS232 / modem), ethernet, data exchange protocols available on demand
Stream selector	4 to 16 stream options available, with a sample pump of 5 l/min, control and data handling by the GC955. Sequence can be individualised, alarm levels can be set for each stream.