

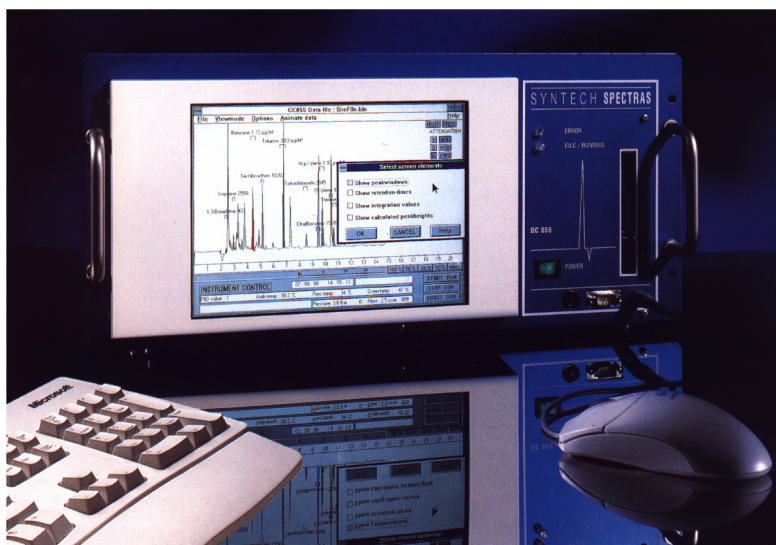
The Syntech Spectras GC955 series 800 Mercaptan analyser

The Syntech Spectras GC955 series 800 Mercaptan analyser is built for the measurement of mercaptans and other sulfur components, in ambient air.

The smell of sulfur components is a problematic issue at many industrial sites. Also at waste deposit sites and at water treatment plants the stench problems are partly due to sulfur components. Many are moderately to very toxic.

Among the many sulfur components measured are: methylmercaptan, ethylmercaptan, (also named thiols), carbondisulfide, dimethyldisulfide and dimethylsulfide. At the same time also other components like benzene can be measured.

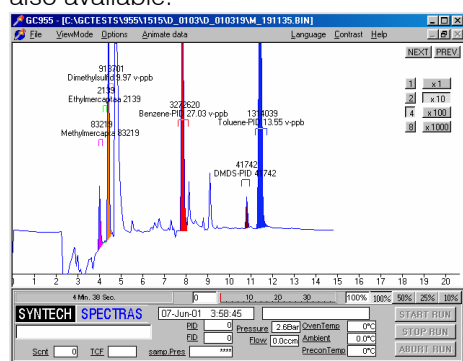
For anyone wanting to measure sulfur components our instrument is the ideal choice: the instruments are not only designed for the analyst working in the laboratory, but especially for the technician working in a field station or at a control panel. Specialised chemical knowledge is not necessary. Versions for emission control are also available.



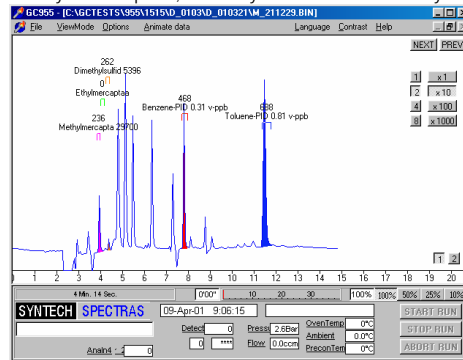
The instrument is a gaschromatograph with a built-in cooled preconcentration system. Sulfur components and other hydrocarbons are preconcentrated on Tenax TA, desorbed thermally at a relatively low temperature and separated on a special strongly separating column combination. The use of a sample dryer is advised, to avoid interference with water. The setting for the column has been optimised to avoid interference from higher boiling hydrocarbons. In a standard instrument up to 30 peaks can be quantified.

In the GC a standard industrial PC with Windows is used. This means that the whole PC structure is available to handle also the results of measurements: data are interpreted and saved on the internal hard disk. Data can also be transferred by network and modem connection. Besides this, analog and digital output options are available to communicate with other data logging systems using several data protocols.

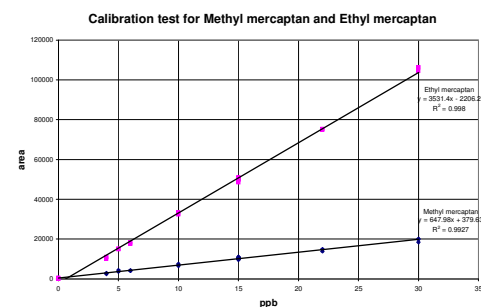
Simple operation, good reliability and low maintenance cost are important to us. With a network of distributors in and outside of Europe you can be sure that your instrument comes complete with an individualised training and that support is available to help if you do encounter problems.



Methyl mercaptan, dimethylsulfide and dimethyldisulfide



Methyl mercaptan and dimethylsulfide



Calibration of Mercaptans

810 Mercaptans and other sulfur components in air	PID detector. Lowest detection level depending on component from 0.2 ppb for Methylmercaptan to 0.01 ppb for disulfides. Range: up to 300 ppb. <i>Included items: SERIES 800, column AT1, 4 + 26 m m, 0.32 mm ID, 3 to 5 µm film, cycle time 15 to 30 min, temp program 45 - 110 °C, flow program</i>
reproducibility	typical <3% at 10 ppb (dimethylsulfide, with capillary column)
consumption of gas	Nitrogen, quality 5.0, 3 bar, 10 ml/min
dimensions	19" rack, 5 standard Height Units, depth 37.2 cm net
power demand	220 V AC, 100 VA (110 V AC available)
included hardware	computer Pentium class, hard disk >40Gb, 2.5", display LCD 10" colour, various data connection options
included software	Windows XPe, control of instrument: direct control via keyboard or mouse, or via remote host (RS232 / modem), ethernet, data exchange protocols available on demand
Option	One PC can control 2 gaschromatographs