

MCS

SYNTECH SPECTRAS MULTI CHANNEL SELECTOR



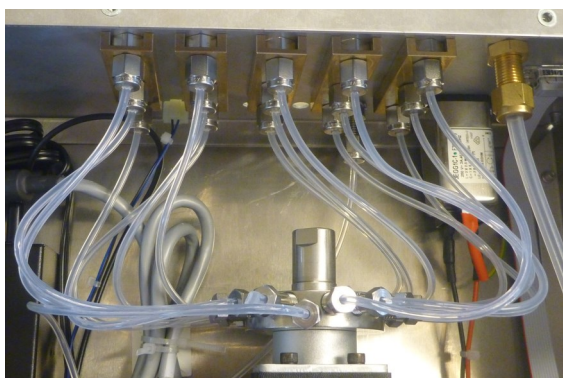
Front view of the multi channel system

Analyzing up to 15 sample lines

The Synspec multi channel selector (MCS) in combination with a Synspec GC system can be used to analyze up to 15 different sample lines with one Synspec gas chromatograph system.

All the different sample lines are connected to the MCS and one sample line is selected by a dedicated switching valve in the MCS. The selected sample line is automatically connected to the sample inlet of the Synspec gas chromatograph system.

A sample pump with a pumping capacity of 5 liters per minute is integrated in the MCS. This capacity is sufficient for analyzing 100 m of 1/4" sample line in a dead-end configuration.



Top view of the dedicated integrated switching valve

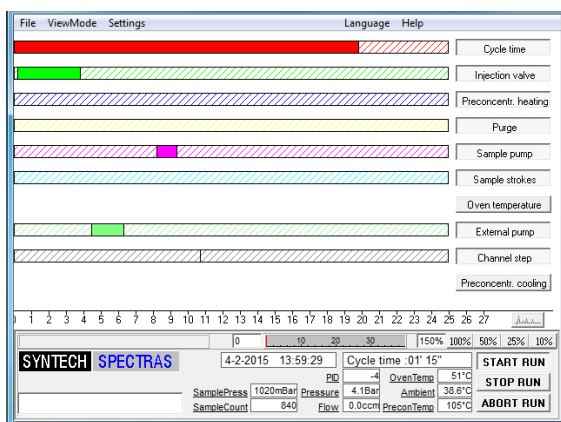
Hardware configurations

Two different hardware configurations of the MCS are available. The best choice depends on the pump capacity, required refresh rate and sample line configuration. Please contact Synspec to discuss the details.

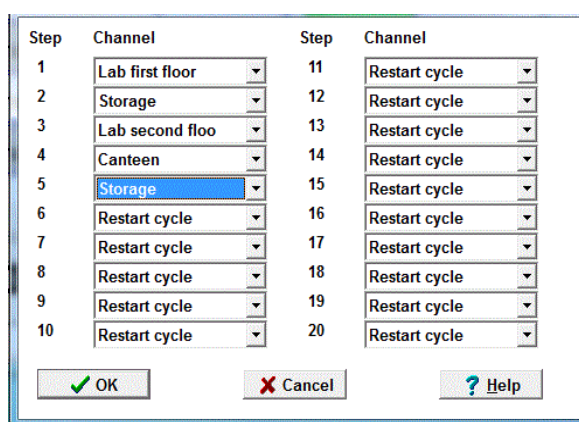
- Dead-End
 - Only the selected sample line is flushed and connected to the GC
- Common-outlet
 - All sample lines are continuously flushed
 - The selected sample line is connected to the GC
 - All sample lines must have equal length
 - An additional pump with higher capacity might be needed to flush all the sample lines

Software

The GC software controls the MCS. This software makes it possible to program the time sequence in which the channels are measured. A sequence of 20 steps (for 15 channels) makes it possible to measure some channels more often than others.



Software setting to control as the external pump



Options for setting the channel sequence

Multi channel selector

**COMBINATION
NUMBER OF CHAN-
NELS**

Can be used in combination with Synspec Alpha, Synspec Delta, Synspec GC955

CONFIGURATION

Option 1: Dead end (only selected sample-line is flushed)
Option 2: Common-outlet (all sample-lines are flushed continuously)

INTERNAL TUBING

Standard: teflon tubing
Optional: stainless steel tubing

PHYSICAL DATA

DIMENSIONS

19" rack, (W 48,3 cm) 3 standard Height Units, (high 13,9 cm) depth 37,2 cm

POWER DEMAND

230 V AC (115 V AC available)

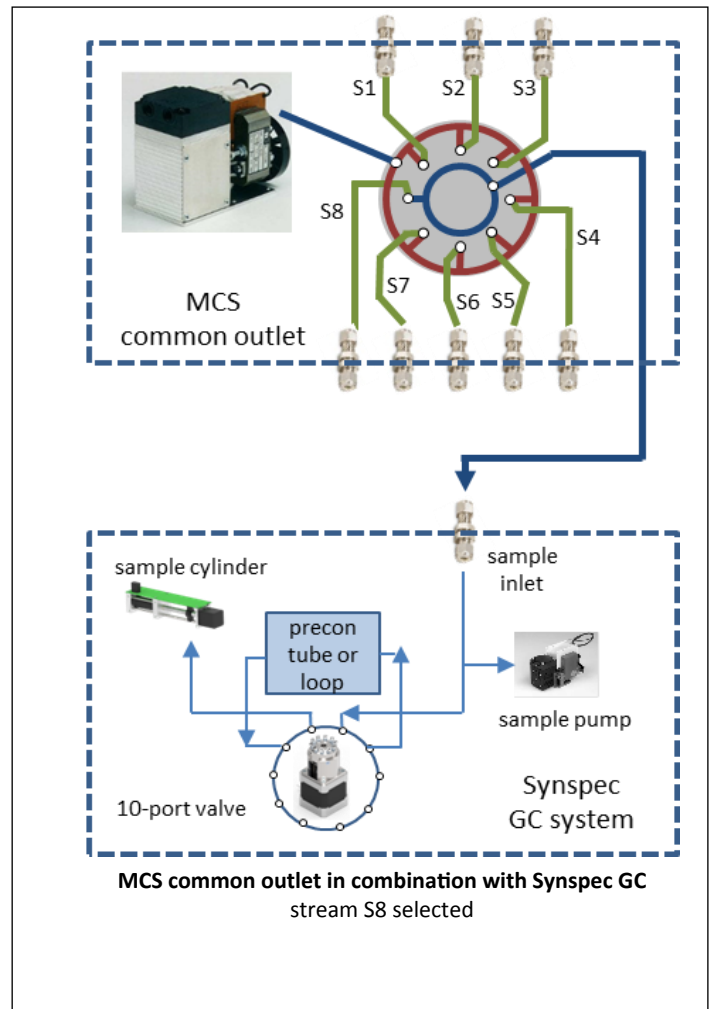
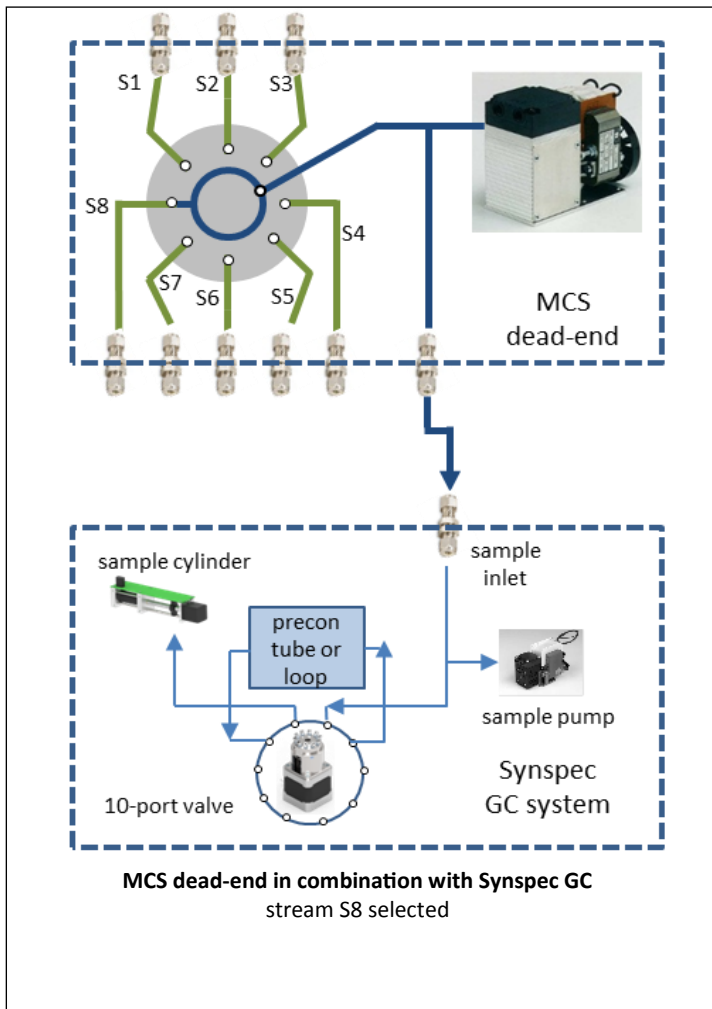
CONDITIONS

5 °C TO 40 °C, 20 TO 95% RH

GENERAL

WARRANTY

Standard warranty 2 years



SYNSPEC BV
DE DEIMTEN 1
9747AV GRONINGEN
NEDERLAND
WWW.SYNSPEC.NL
INFO@SYNSPEC.NL

